

# AccuVert™ HCV Seroconversion Panel

0610-0225 / Batch #10724087

## OVERVIEW

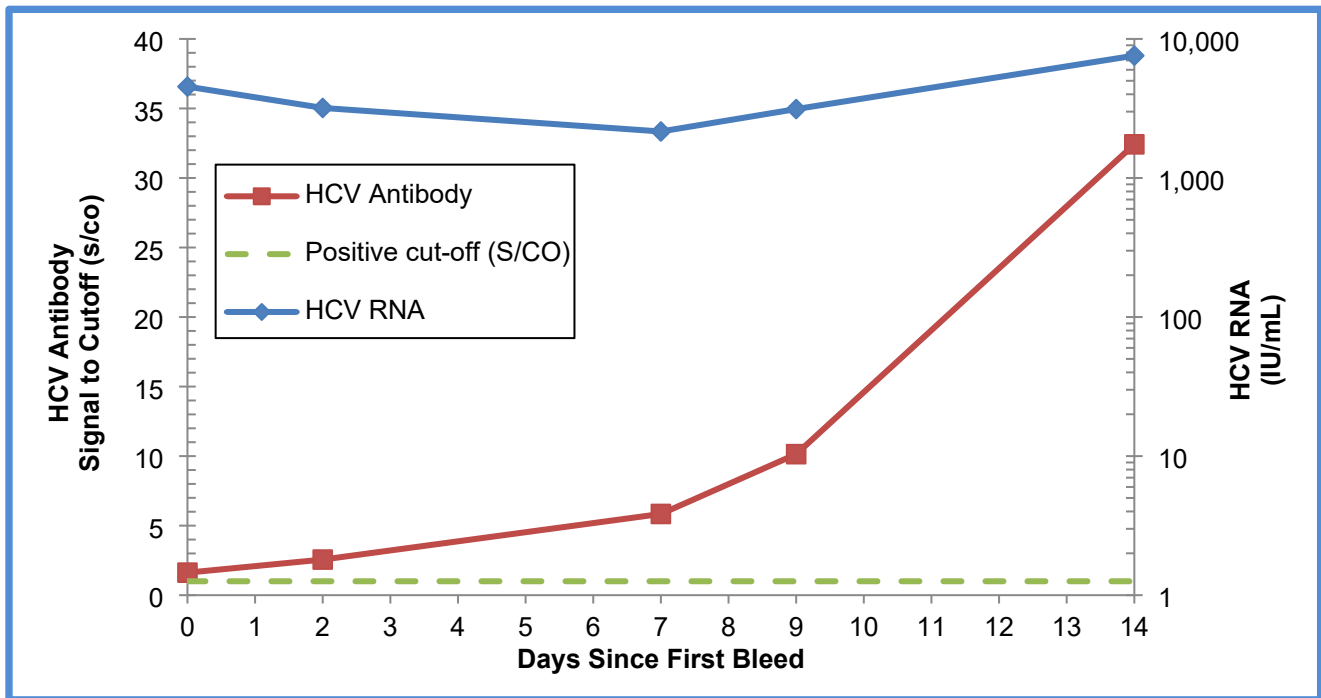
AccuVert™ HCV Seroconversion Panel 0610-0225 / Batch #10724087 is a 5-member validation panel of undiluted, naturally occurring plasma samples (1 vial per member, 1.2 mL per vial). Panel members represent serial bleeds collected over 14 days from a 37-year old male with HCV Genotype 3a in the United States in 2009. No preservatives were added.

Test results from commercially-available HCV assays are included for characterization of the panel members. This panel of human plasma samples demonstrates a change in expression from negative to positive for antibodies to HCV during the development and progression of an HCV infection.

For Research Use Only. Not for use in diagnostic procedures. Data are offered for informational purposes. LGC SeraCare Life Sciences does not claim that others can duplicate test results exactly.

CAUTION: Potentially infectious materials. Follow Universal Precautions. All panel members were found positive for HCV; all were found negative for anti-HIV-1/2 and HBsAg. This does not ensure the absence of these or other human pathogens.

AccuVert™ HCV Seroconversion Panel



This graph demonstrates the evolution of early HCV infection amongst panel members from the Roche cobas® 6800/8800 HCV Test (HCV RNA) and the Abbott Alinity s Anti-HCV (HCV Antibody) test methods.

# AccuVert™ HCV Seroconversion Panel

0610-0225 / Batch #10724087

## Panel Member Information

Panel Member	SeraCare Batch #	SeraCare Donor ID #	Bleed Date	Days Since 1 <sup>st</sup> Bleed
01	9242336	BD110059	05-May-2009	0
02	9242337	BD110059	07-May-2009	2
03	9242338	BD110059	12-May-2009	7
04	9242339	BD110059	14-May-2009	9
05	9242340	BD110059	19-May-2009	14

## HCV RNA<sup>1</sup>

Panel Member	Roche cobas® 6800/8800 HCV RNA (IU/mL)	Abbott Alinity m HCV RNA (IU/mL)
01	<b>4.54 x 10<sup>3</sup></b>	<b>6.78 x 10<sup>3</sup></b>
02	<b>3.19 x 10<sup>3</sup></b>	<b>4.82 x 10<sup>3</sup></b>
03	<b>2.16 x 10<sup>3</sup></b>	<b>2.31 x 10<sup>3</sup></b>
04	<b>3.13 x 10<sup>3</sup></b>	<b>4.50 x 10<sup>3</sup></b>
05	<b>7.58 x 10<sup>3</sup></b>	<b>8.70 x 10<sup>3</sup></b>
Test Date	05-Nov-2024	06-Nov-2024
Test Site	RL	RL
Kit Part Code	NA	NA
Kit Lot No.	NA	400201
Kit Exp. Date	NA	11-Dec-2025

<sup>1</sup>Results are reported as the mean result of duplicate testing; positive/reactive results are noted in bold red.  
RL = Reference Lab; Not Available

# AccuVert™ HCV Seroconversion Panel

0610-0225 / Batch #10724087

## Anti-HCV<sup>1</sup>

Panel Member	Abbott Alinity s Anti-HCV (S/CO)	Roche cobas® Elecsys Anti-HCV II (COI)	Siemens ADVIA Centaur® HCV (IgG) (Index Value)	Ortho® HCV Version 3.0 ELISA (S/CO)
01	<b>1.62</b>	<b>5.72</b>	0.45	0.03
02	<b>2.56</b>	<b>7.77</b>	0.53	0.04
03	<b>5.84</b>	<b>31.10</b>	0.73	0.06
04	<b>10.14</b>	<b>66.90</b>	0.94*	0.12
05	<b>32.42</b>	<b>300.00</b>	<b>3.26</b>	<b>1.16</b>
Test Date	05-Nov-2024	15-Nov-2024	07-Nov-2024	04-Nov-2024
Test Site	RL	RL	RL	LGC
Kit Part Code	NA	NA	NA	6195566
Kit Lot No.	62454BE00	NA	86234473	SXE058
Kit Exp. Date	28-Apr-2025	NA	07-May-2025	03-May-2025

<sup>1</sup>Results are reported as the mean result of duplicate testing; positive/reactive results are noted in bold red.

\*Result is considered equivocal

RL = Reference Lab; LGC = LGC SeraCare; NA = Not Available

## HCV Confirmatory Assay<sup>1</sup>

### INNOGENETICS® INNO-LIA™ HCV Score

#### Band Results

Panel Member	HCV Antibody Interpretation	C1	C2	E2	NS3	NS4	NS5
01	NEG	-	-	-	-	-	-
02	NEG	-	-	-	-	-	-
03	NEG	-	-	-	-	-	-
04	NEG	-	-	-	-	-	-
05	IND	-	-	-	1+	-	-
Test Date	19-Nov-2024						
Test Site	RL						
Kit Part Code	NA						
Kit Lot No.	290596						
Kit Exp. Date	30-Jun-2025						

<sup>1</sup>Results are reported as singlicate testing.

RL = Reference Lab; NA = Not Available

NEG = Negative; IND = Indeterminate

The package insert for this panel can be found at  
[www.seracare.com](http://www.seracare.com).

A printed copy of the package insert or data sheet may  
be requested by email at [CDx-Info@LGCGroup.com](mailto:CDx-Info@LGCGroup.com) or  
by phone at 508.244.6400.